

IF YOU CAN TORQUE IT WE CAN MONITOR IT

IF YOU CAN TORQUE IT WE CAN MONITOR IT

# TORQ-PIN

Cables & Connectors

### 1. MAIN CABLE:

Connects Pin to Display  
Available in 65ft, 25ft & 15ft lengths

### 2. MAIN EXTENSION CABLE:

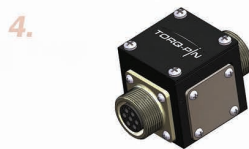
Adds length to Main Cable  
Available in 25ft, 15ft, 10ft & 5ft lengths

### 3. JIB CABLE:

Allows Easy Separation at End of Boom  
Available in 15ft, 10ft & 5ft lengths

### 4. JUNCTION BOX:

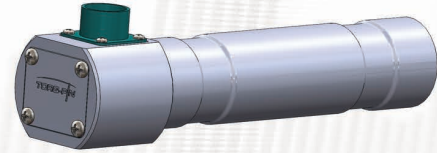
Allows Laser Range Finder Connection



CTS Cables are Rugged & Dependable. Featuring:

- Amphenol mil-spec connectors  
Thread together for positive retention
- Overmolded connectors  
Strong & environmentally sealed
- Rugged cable assemblies  
Steel braided for added durability

# TORQ-PIN



**98%**  
Accurate Torque Measurement  
and Data Logging System for  
Helical Pile Installers



Ph: 403.340.3466  
Fax: 403.340.3456  
Email: [info@concepttorque.com](mailto:info@concepttorque.com)  
Web: [www.concepttorque.com](http://www.concepttorque.com)  
#540, 7700 - 76th Street Close, Red Deer, AB T4P 4G6



Patent Pending

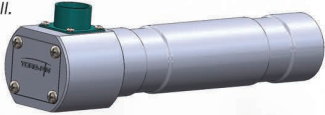
[WWW.CONCEPTTORQUE.COM](http://WWW.CONCEPTTORQUE.COM)

IF YOU CAN TORQUE IT WE CAN MONITOR IT

# TORQ-PIN

SETTING A NEW INDUSTRY STANDARD

TORQ-PIN is a revolutionary new torque monitoring and data logging system that can fit any type of drive head. Where conventional hydraulic reading can be 30 - 50% out, the TORQ-PIN monitoring system offers **true torque readings that are 98% accurate!** TORQ-PIN works simply by replacing your current pin with a new load cell. There is absolutely no loss of boom height which can occur with other systems.



- Torque measurement from very accurate & reliable strain gages (>98% accuracy)
- Systems available for all major OEM drive heads - up to 367,000 ft/lbs.
- No longer reliant on notoriously inaccurate hydraulic pressure differential systems.
- No loss of "stroke" - unlike "spool" type systems our product simply replaces OEM pin on drive head.
- Patent pending technology to eliminate the effects of perpendicular force on the strain gages.
- Inclinometer included in every Torq-Pin package
- Calibration report with each Torq-Pin - proving accuracy claimed - traceable to NIST standards.
- Calibrated in-house with test bed capable of up to 400,000 ft/lbs.
- Durable, wired connection eliminates the need for batteries (as in wireless systems)
- Electronics are completely sealed from the environment
- Torque signal output is digital (SAE J1939 CANBUS) - impervious to signal interference, unlike analog systems
- Microprocessor & RAM inside pin head contains all calibration data for the pin - meaning your choice of display (8.4" or 4.3") is literally - "plug and play"
- Pins to replace all major drive head OEM's
- Mechanically engineered with a minimum 2:1 safety factor (using OEM sizes)
- Rugged, mil spec electrical connections



- Specially designed torque pin
- Designed to fit all Manufacturer's Drive Heads
- Fully engineered to handle maximum load with a safety factor

### LCD Touch-Screen Displays

All Torq-Pin Packages Ship with Your Choice of Either an 8.4" OR 4.3" Touch-Screen Display

- Data logger built in to each display to record torque, depth, angle, date, time and several other fields the user can enter "job specific" information.
- Graphical representation of current torque in ft/lbs or n/m
- Graphical representation of inclinometer output.
- Inclinometer can be preset by operator to maintain vertical - or to another angle (ie: 30° or 45°) for battered or angled pile installations.
- Automatically displays date & time.
- Allows user entry of a unique pile number or pile serial number.
- User can manually enter depth of each pile, or an optional laser range finder can be purchased to automate depth measurement & recording.
- Both display options are IP67 rated for environmental protection.
- USB port allows export of logged data (torque, depth, inclination, time) in excel format.
- Ships with suction cup mounts & cigarette lighter power adaptor for ease of installation.
- Input voltage: 9-36v - allows use of either 12 or 24v prime mover electrical supply.

**98%**  
Accurate Torque Measurement  
and Data Logging System for  
Helical Pile Installers



8.4" Display



4.3" Display

